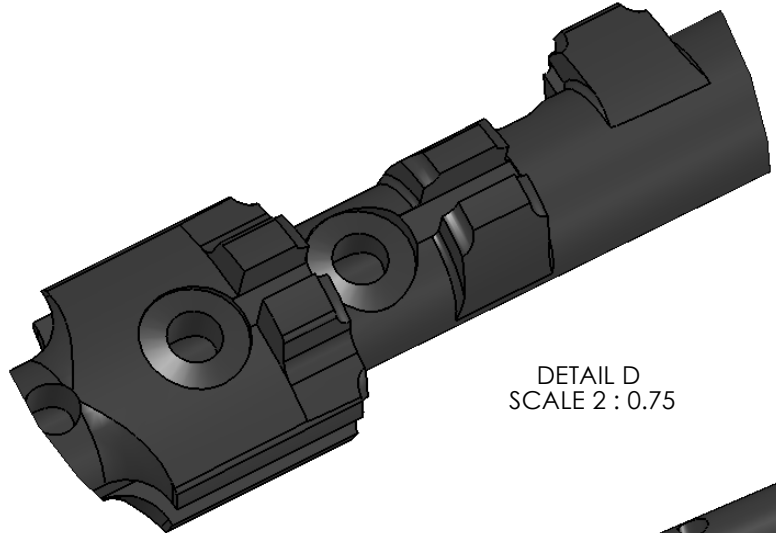


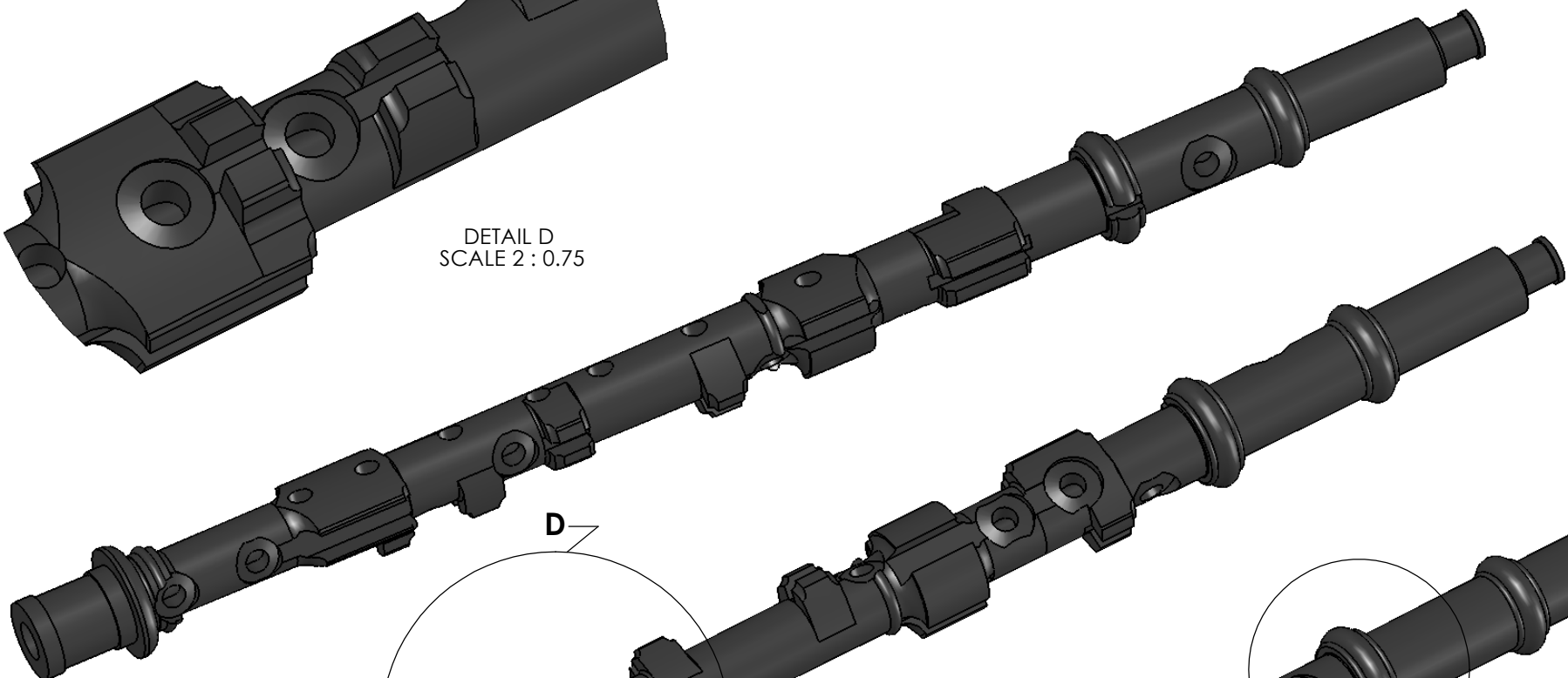
**NOTE**

1. UNDIMENSIONED FEATURES MAY BE SCALED FROM THE DRAWING.
2. THE BOTTOM G# HOLE IS  $\phi 4.0$  AND THE PAD IS  $\phi 8.0$

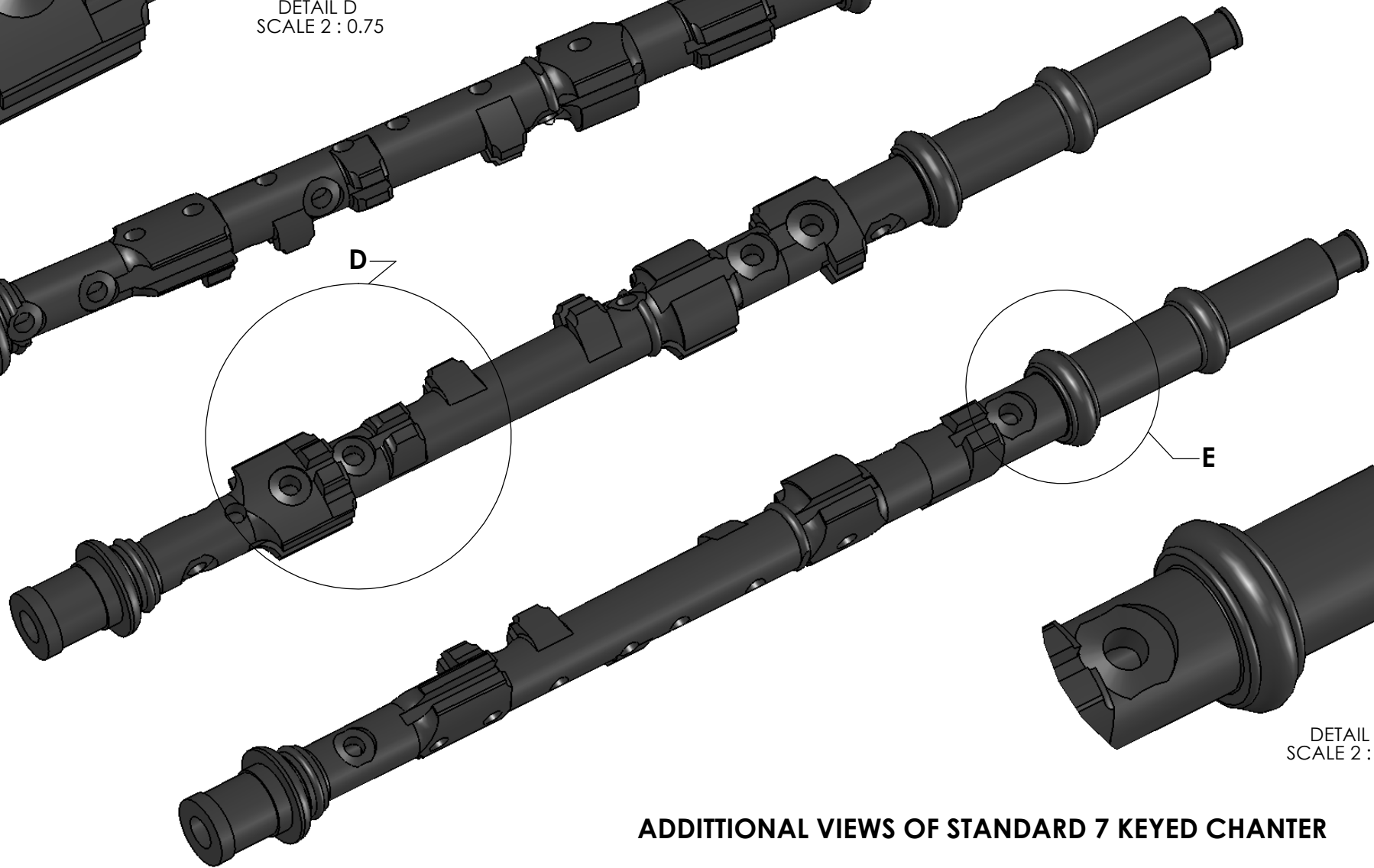
STANDARD 11 KEY CHANTER TO PLAY AT CONCERT "G" PITCH



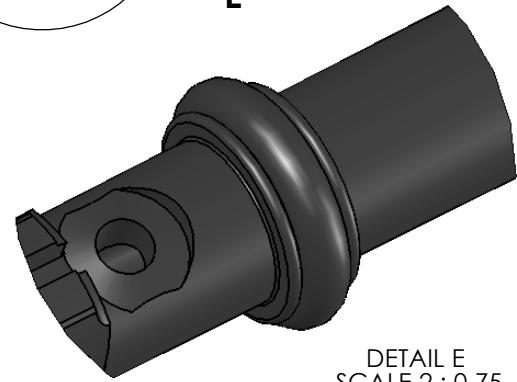
DETAIL D  
SCALE 2 : 0.75



D



E



DETAIL E  
SCALE 2 : 0.75

**ADDITIONAL VIEWS OF STANDARD 7 KEYED CHANTER**